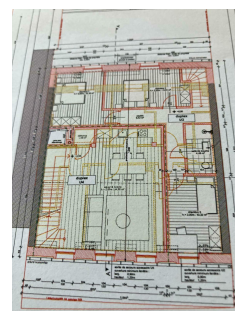
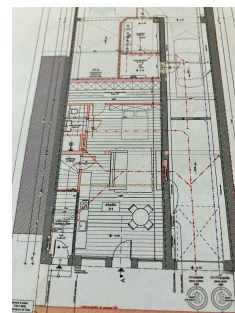


House to renovate

275m² 6 Bedroom(s)
ECHTERNACH

785 000€



DESCRIPTION

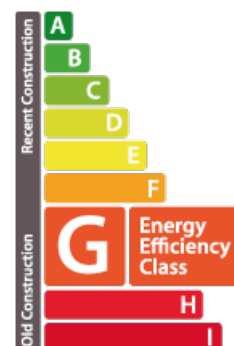
all inquiries should be made by email to rbi@pt.lu
please ECHTERNACH-CENTRE interesting for private individuals and
developers/investors 275sqm building plus 175sqm garage/warehouse!!!! in need
of renovation, but with authorization to create 4 apartments (2 studios and 2
duplexes with 3 bedrooms) for a net living area of 289sqm and 6 parking spaces
(2 double and 2 single), plus, given the height of the garage/storage area, the
possibility of creating an office mezzanine of 110sqm!!! possible profit for
developer minimum 600,000€ or even more may also be of interest to small
businesses, such as heating engineers, electricians, builders, architects,
engineering offices with residential units slots of potential (we have customers for
the purchase of apartments!!) concrete slab on ground floor, the remainder can be
built using timber frame construction, which is 120,000€ less expensive than
traditional construction and takes only 8 months to complete possible rental
income of 7,000€ or more per month...

CHARACTERISTICS

Number of pieces : 15
Nb. chamber (s) : 6
Area : 275m²
Nb. of bathrooms : -
Equipped kitchen : Non

ENERGY PASS

Energy class



CO2 emissions Class



✓ **RBI Luxembourg S.A**

📍 **B.P 6 L-5501**
☎ **+352-346520**
✉ **rbi@pt.lu**
🌐 **<https://www.rbi.lu/en/detail-2449727>**